

Technical data

Categories No: TNLIM

Name: Large-Inner Thin-walled Carbon Nanotubes

Purity:>60%

OD:30-60nm [OD=Outer Diameter]

Length: 1-10um

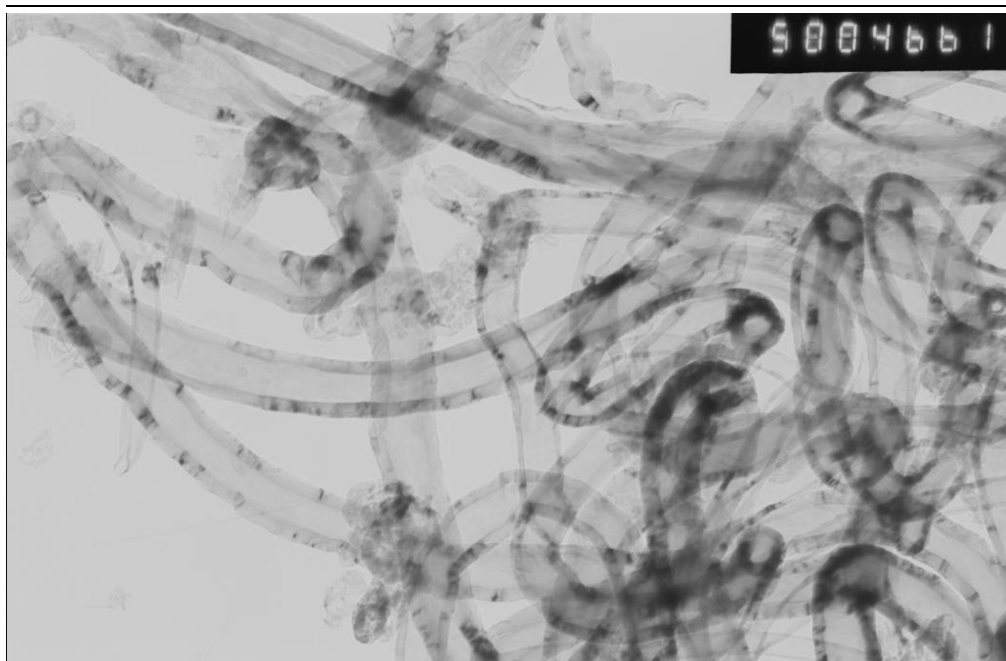
SSA: >100m²/g [SSA=Specific Surface Area]

Color: Black

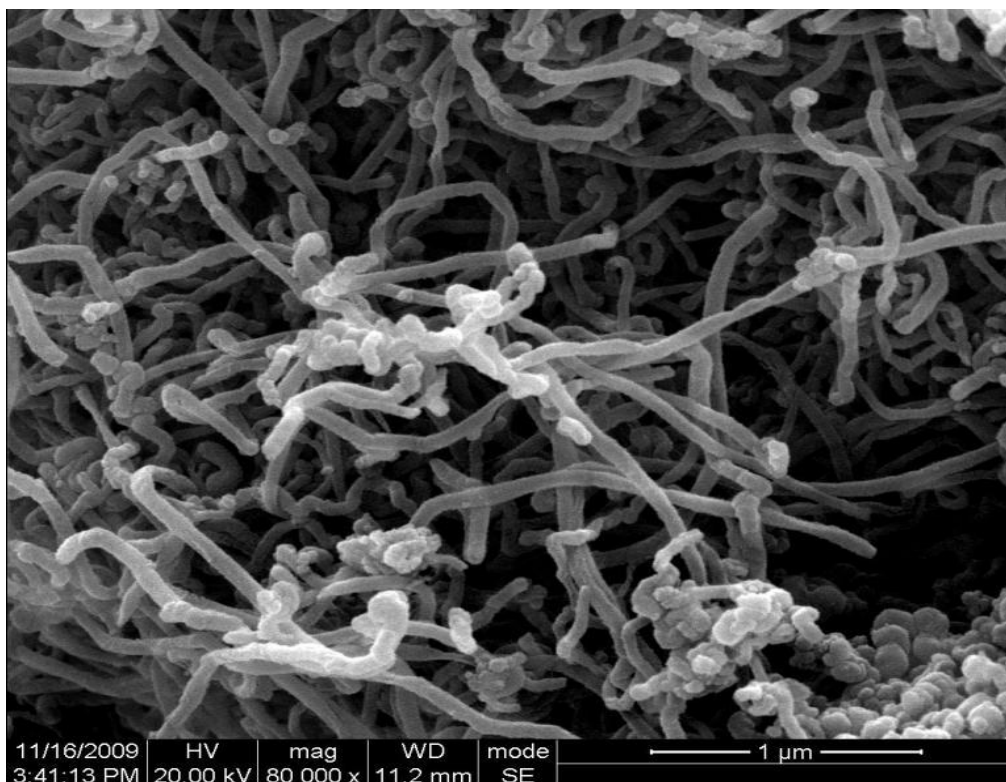
Ingnited Temperature:>580°C

ASH:<2%

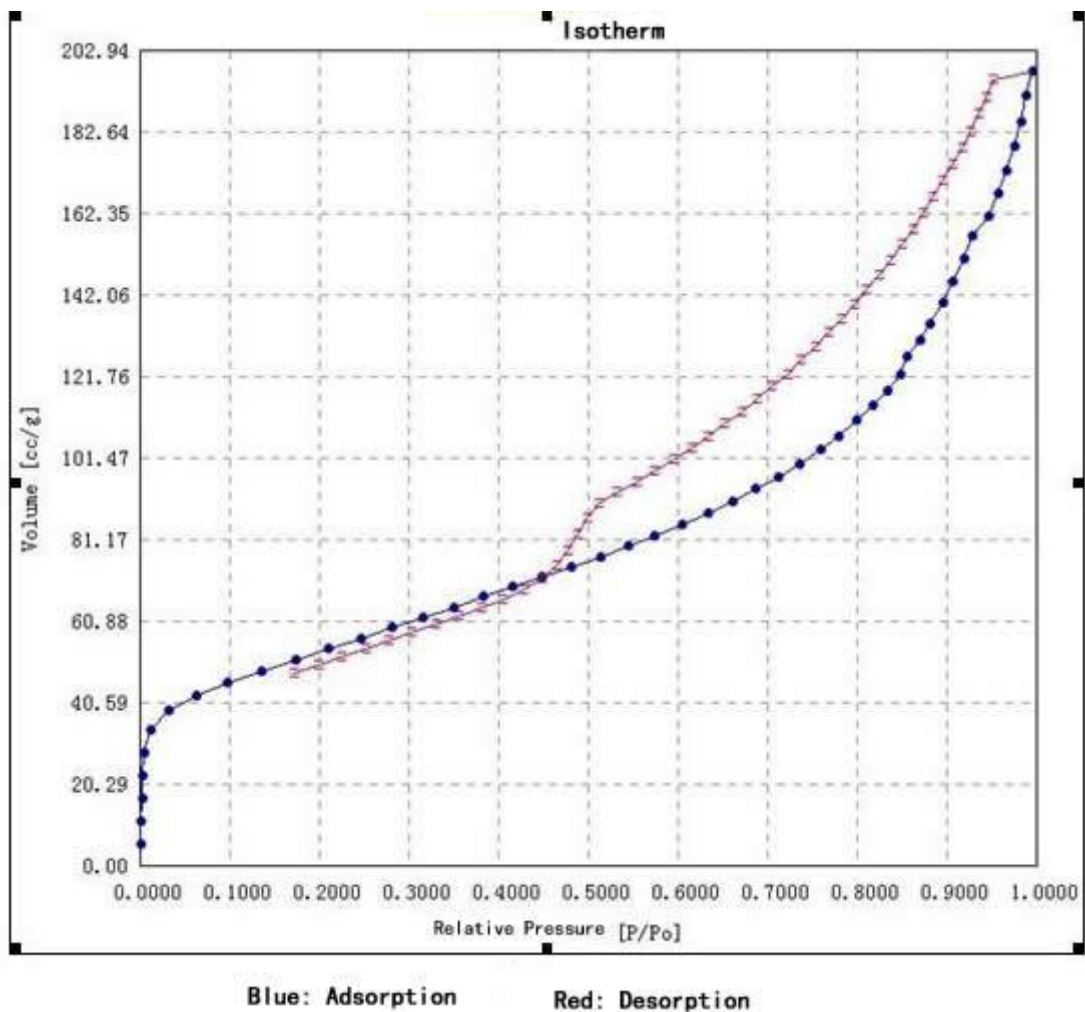
Making method: CVD



TEM



SEM



Application instruction

Potential Applications of Carbon Nanotubes

Additives in polymers

Catalysts

Electron field emitters for cathode ray lighting elements

flat panel display

gas-discharge tubes in telecom networks

Electromagnetic-wave absorption and shielding

Energy conversion

Lithium-battery anodes

Hydrogen storage

Nanotube composites (by filling or coating);

Nanoprobes for STM, AFM, and EFM tips

nanolithography

nanoelectrodes

drug delivery

sensors

Reinforcements in composites

Supercapacitor